



DEFINITIVE FEASIBILITY STUDY COMMENCEMENT AT TRIDENT

Highlights:

- **Positive K2 DFS outcome provides confidence to advance mining studies on the Trident Deposit**
- **Entech appointed as DFS Manager for Trident**

Overview:

Ord River Resources Limited (ASX:ORD, "ORD") is pleased to announce the commencement of a Definitive Feasibility Study (DFS) on the Trident Deposit in the Plutonic Dome Gold Project (Farm In/Joint Venture with Dampier Gold Limited, ASX:DAU).

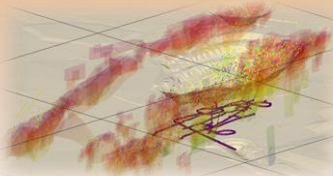
Ord currently is earning up to a 75% interest in the Plutonic Dome Gold Project (PDGP) through spending a minimum of \$6m across the Project prior to January 2nd, 2016.

The study is focussed towards the assessment the economic viability of underground mining at the Trident Deposit.

ORD commissioned the study to be managed by leading engineering and services group, Entech Pty Ltd (**Entech**), with input from various industry consultants.

Mr Frank Zhu, Managing Director commented *"With the recent successful completion of the DFS at K2 Deposit, Ord is seeking to determine the viability of the second phase of its growth strategy for the broader Plutonic Dome Gold Project."*

This exciting process has the potential of generating a long life, substantial project through the sequential development of K2 and Trident respectively."



ASX Announcement:

09/07/2014

Australian Securities Exchange

Code: ORD

Board of Directors:

Frank Zhu
Managing Director

Graham McGeagh
Non-Exec Chairman

Bruce McInnes
Executive Deputy Chairman

Michael P Lee
Non-Exec Director

For personal use only



Location

The Trident deposit is located 30 km northeast from Northern Star's Plutonic Gold Mine and approximately 210 km NE of Meekatharra, Western Australia.

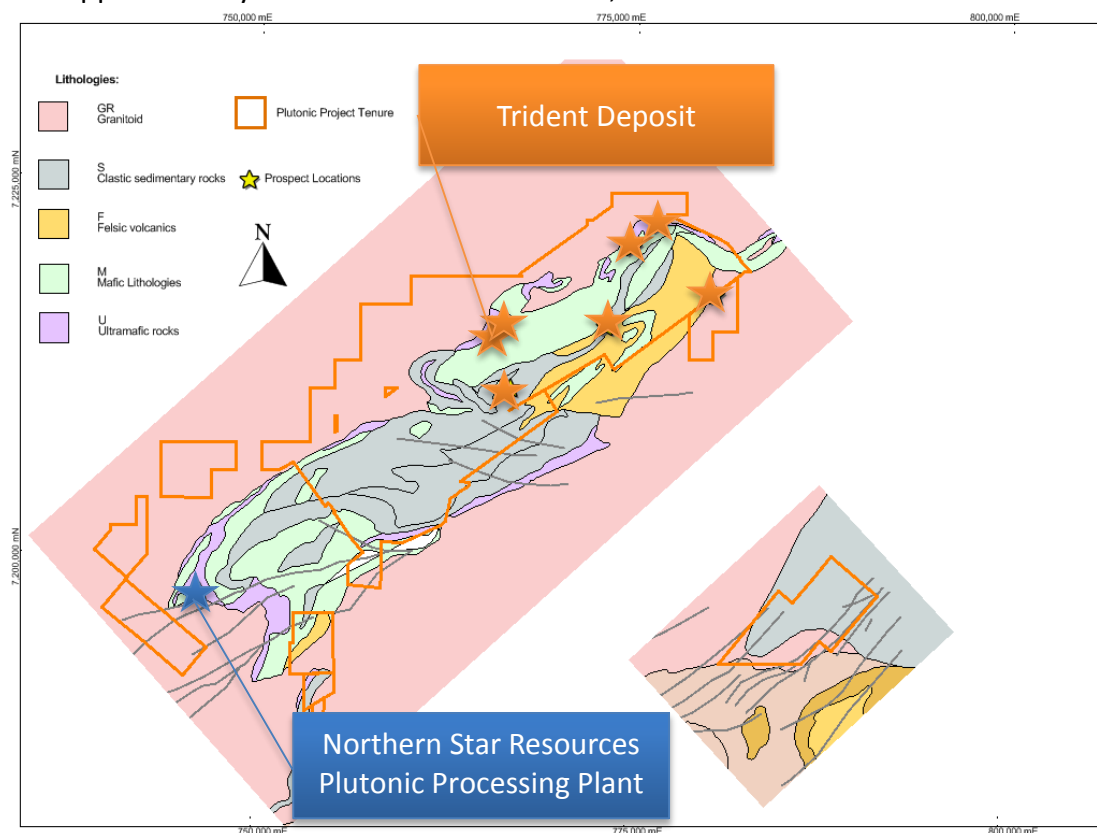


Figure 1: Project Location Plan

Entech Pty Ltd appointed as Feasibility Study Manager:

Entech has been appointed as Feasibility Study manager for the Trident Development Project. Entech has extensive experience in study management and project development. Recent projects conducted by Entech include: the successful K2 Underground DFS, Underground study for Sirius Resources, Underground study for Sandfire Resources DeGrussa Copper Project and Reserve Estimations for Northern Star Resources' Paulsons Gold Mine.

For further information, please contact:

Frank Zhu, Managing Director, Ord River Resources: frankzhu@ord.com.au, +61 420 318 004

For personal use only